

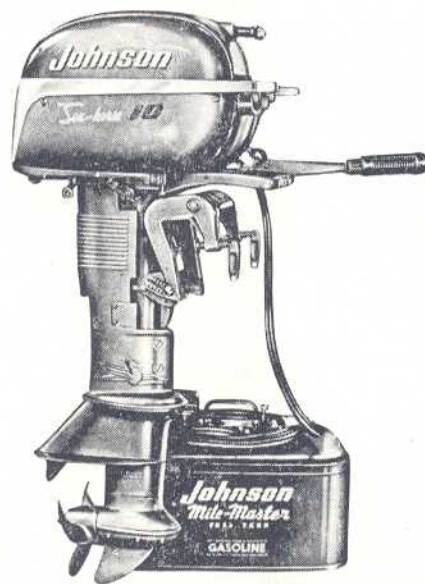
REPAIR PARTS CATALOG

1953

FOR

MODELS

QD-14 and QDL-14



SEA-HORSE 10

JOHNSON MOTORS

Waukegan, Illinois, U. S. A.

All Prices Subject to Change Without Notice

Be Sure to Specify Model and Serial Number of Motor When Ordering Parts

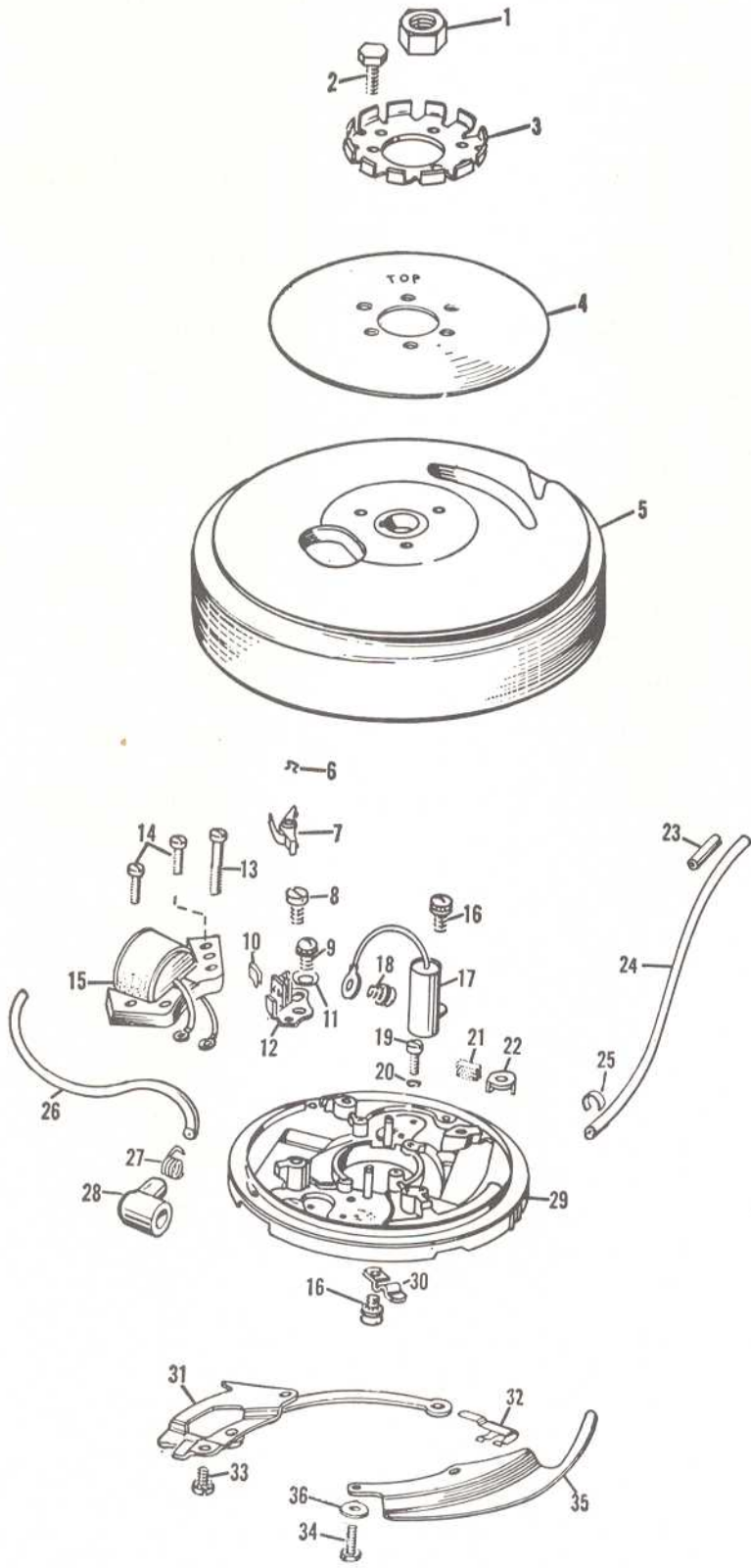
PHOTO AND PART NUMBERS FOR MILE MASTER FUEL TANK GROUP

Photo No.	Part No.	Name of Part	Photo No.	Part No.	Name of Part
1	301828	Retainer	28	302563	Diaphragm
2	301824	O-Ring	29	301802	Disc Valve
3	301827	Washer	30	302571	Seal
4	301826	Valve	31	302568	Glass
5	301825	Spring	32	301736	Lockwasher
6	375587	Fuel Connector Assembly	33	21-195	Nut
7	301819	Washer	34	301803	Spring
8	301820	Nipple	35	302555	Housing
9	301830	Lock	36	13-558	Screw
10	301832	Rivet	37	302654	Snap Ring
11	301829	Spring	38	302653	Pin
12	301822	Hose Clamp	39	302559	Float
13	301821	Hose	40	375778	Indicator Assembly
14	375817	Filler Cap Assembly	41	375846	Foot Valve Assembly
15	301835	Gasket	42	132691	Nut
16	302560	Plate	43	13-304	Gland
17	301837	Screw	44	302135	Spring
18	43-259	Screw	45	302137	Washer
19	302570	Handle	46	302136	Valve
20	132124	Screw	47	302557	Gasket
21	301814	Gaskets	48	302556	Support
22	302572	Housing	49	53-85	Screw
23	302802	Retainer	50	375774	Fuel Tank (Only)
24	301815	Push Button	51	301838	Chain
25	17-186	Cotter Pin	52	15-213	Cotter Pin
26	302561	Push Rod		(375777	Fuel Tank
27	301800	Support		Assembly Complete)	

See Page 22 for Numerical Part List

Order All Parts from Nearest Service Station or Dealer

MAGNETO GROUP



Be Sure to Specify Model and Serial Number of Motor When Ordering Parts

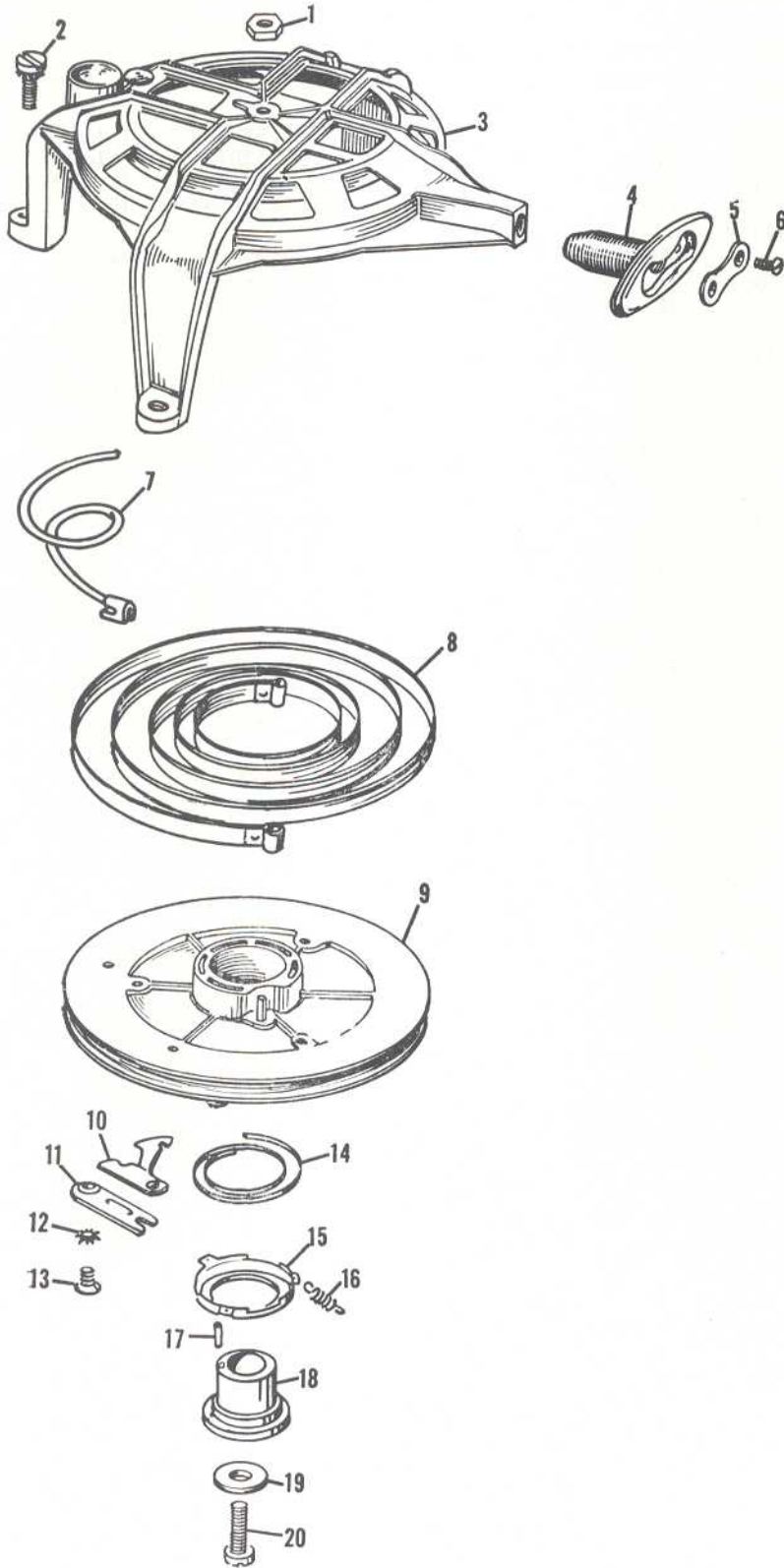
PHOTO AND PART NUMBERS FOR MAGNETO QD-14 GROUP

Photo No.	Part No.	Name of Part	Photo No.	Part No.	Name of Part
1	301988	Nut	21	510189	Oiler Wick
2	303289	Screw	22	510188	Oiler Clip
3	202111	Ratchet	23	510233	Insulating Sleeve
4	303249	Cover	24	510234	H. T. Lead - Upper
5	580155	Flywheel Assembly	25	71-1239	Marker
6	71-1052	Spring Clip	26	510235	H. T. Lead - Lower
7	580123	Breaker Arm Assembly	27	510231	Spring Terminal
8	510185	Eccentric Screw	28	510232	Rubber Cover
9	130255	Screw	29	580168	Armature Plate, Sleeve and Post Assembly
10	510204	Clip		(580153	Armature Plate Assembly Complete)
11	510208	Bow Washer	30	510218	Clamp
12	580122	Breaker Base Assembly	31	375995	Link and Stop Assembly
13	510191	Screw	32	303146	Spring Clip
14	510195	Screw	33	510193	Screw
15	580118	Coil and Lamination Assembly	34	302750	Screw
16	510193	Screw	35	303113	Cam
17	510173	Condenser	36	300154	Washer
18	510194	Screw			
19	510192	Screw			
20	3-28	Lockwasher			

See Page 22 for Numerical Part List

Order All Parts from Nearest Service Station or Dealer

STARTER GROUP



Be Sure to Specify Model and Serial Number of Motor When Ordering Parts

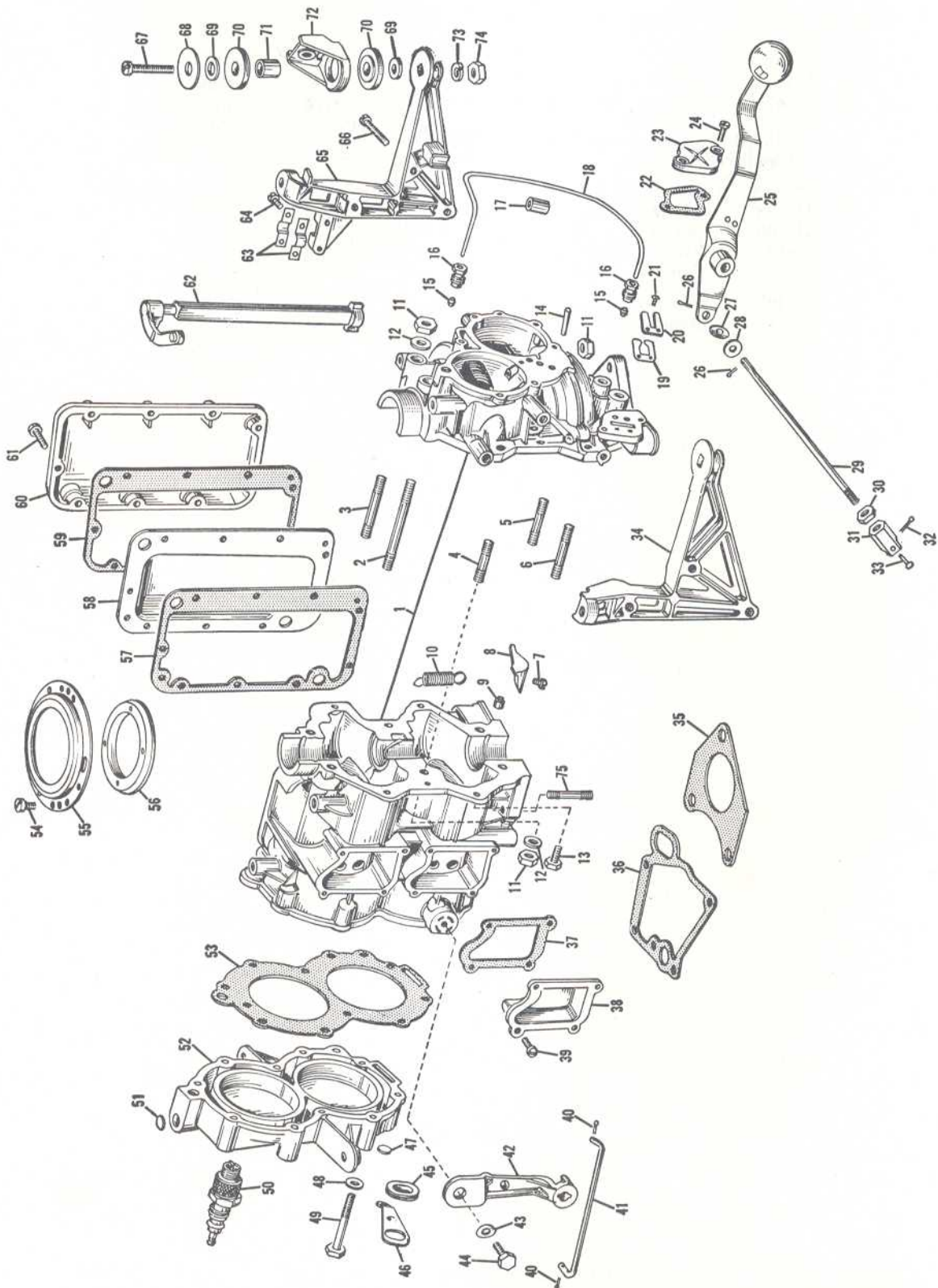
PHOTO AND PART NUMBERS FOR STARTER GROUP

Photo No.	Part No.	Name of Part	Photo No.	Part No.	Name of Part
1	302103	Nut	9	590646	Starter Pulley Assembly
2	303288	Screw	10	202470	Starter Pawl
3	375620	Starter Housing and Pin Assembly (375681 Starter Assembly Complete)	11	202317	Retainer
4	375542	Handle	12	71-1026	Lockwasher
5	41-188	Clamp Plate	13	302104	Screw
6	41-205	Screw	14	302222	Friction Spring
7	42-137	Starter Rope and Anchor Assembly	15	202114	Equalizer Cup
8	41-197	Starter Spring Assembly	16	202155	Spring
			17	202156	Pin
			18	276643	Spindle and Pin Assembly
			19	202356	Washer
			20	51-223	Screw

See Page 22 for Numerical Part List

Order All Parts from Nearest Service Station or Dealer

POWER HEAD GROUP



Be Sure to Specify Model and Serial Number of Motor When Ordering Parts

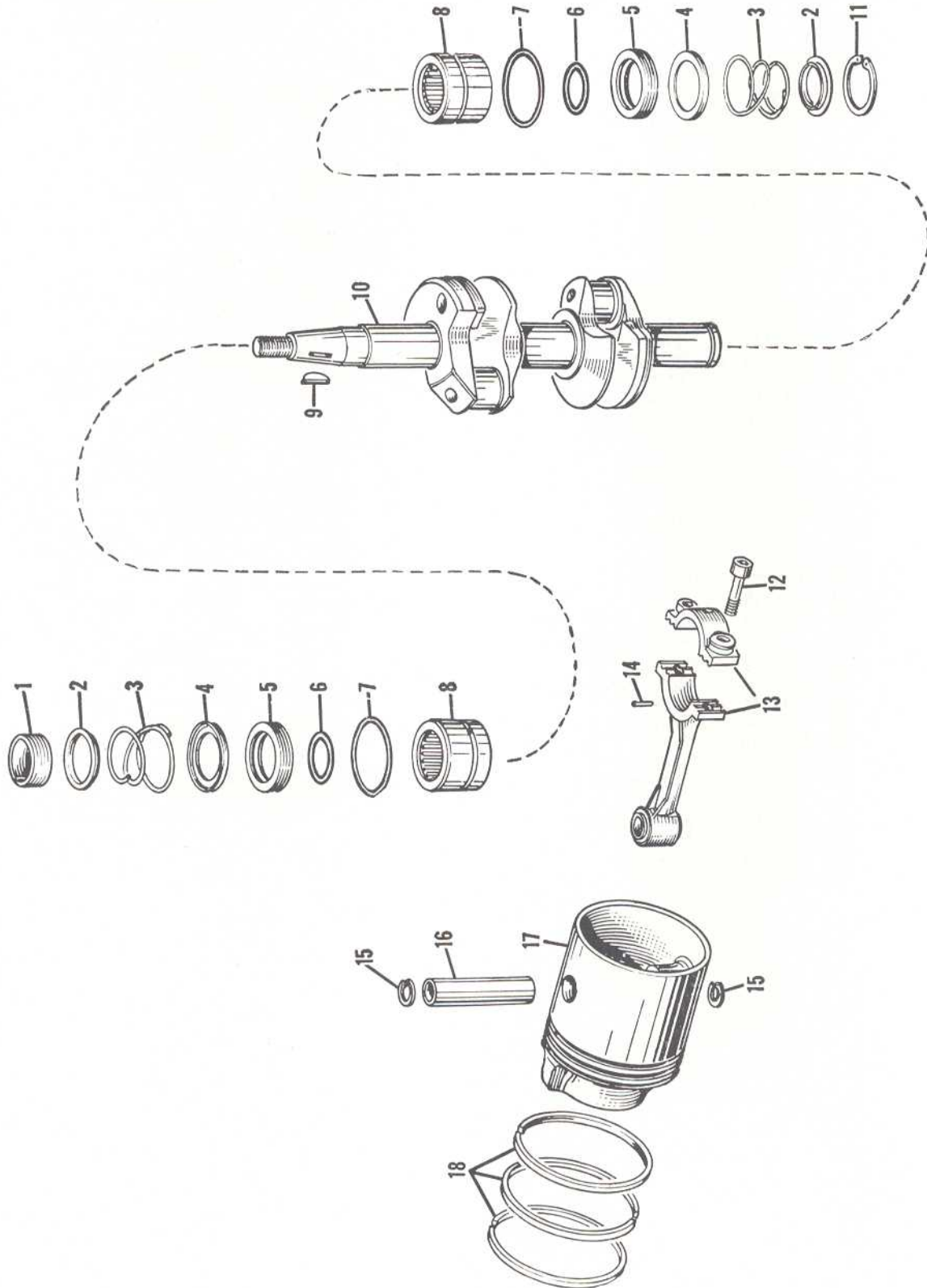
PHOTO AND PART NUMBERS FOR POWER HEAD GROUP

Photo No.	Part No.	Name of Part	Photo No.	Part No.	Name of Part
1	376097	Cylinder and Crankcase Assembly	38	301848	Cover
2	302018	Stud	39	43-259	Screw
3	302019	Stud	40	15-268	Cotter Pin
4	21-170	Stud	41	303253	Link
5	302017	Stud	42	303255	Lever
6	41-328	Stud	43	303254	Bow Washer
7	43-147	Screw	44	302592	Screw
8	302235	Plug	45	300454	Grommet
9	302037	Dowel	46	300455	Anchor
10	302827	Spring	47	19-51	Core Plug
11	7-46	Nut	48	300399	Washer
12	37-154	Washer	49	302009	Screw
13	51-135	Screw	50	200322	Spark Plug
14	300402	Taper Pin	51	27-309	Core Plug
15	11-61	Gland	52	375594	Cylinder Head and Core Plug Assembly
16	41-105	Packin Nut	53	301862	Gasket
17	302811	Spacer	54	41-223	Screw
18	375674	Oil Line Assembly Complete	55	303278	Support
19	302031	Leaf Valve	56	302377	Retaining Ring
20	302034	Plate	57	301854	Gasket
21	19-191	Screw	58	301849	Cover
22	302032	Gasket	59	301853	Gasket
23	302033	Cover	60	303103	Cover
24	13-558	Screw	61	132346	Screw
25	375633	Shift Lever and Knob Assembly	62	303145	Lever
26	41-163	Cotter Pin	63	303109	Bearing Clamp
27	302473	Bow Washer	64	43-156	Screw
28	302474	Washer	65	303105	Bracket - Port
29	302040	Link	66	41-178	Screw
30	301949	Nut	67	302408	Screw
31	302039	Clevis	68	302407	Washer
32	301912	Cotter Pin	69	43-302	Washer
33	302038	Pin	70	302405	Grommet
34	301864	Bracket - Star	71	302406	Spacer
35	302232	Gasket	72	302404	Bracket
36	303138	Gasket		(375716	Mounting Bracket Assembly)
37	301847	Gasket	73	13-52	Lockwasher
			74	19-136	Nut
			75	7-143	Stud

See Page 22 for Numerical Part List

Order All Parts from Nearest Service Station or Dealer

CRANKSHAFT, PISTON AND CONNECTING ROD GROUP



Be Sure to Specify Model and Serial Number of Motor When Ordering Parts

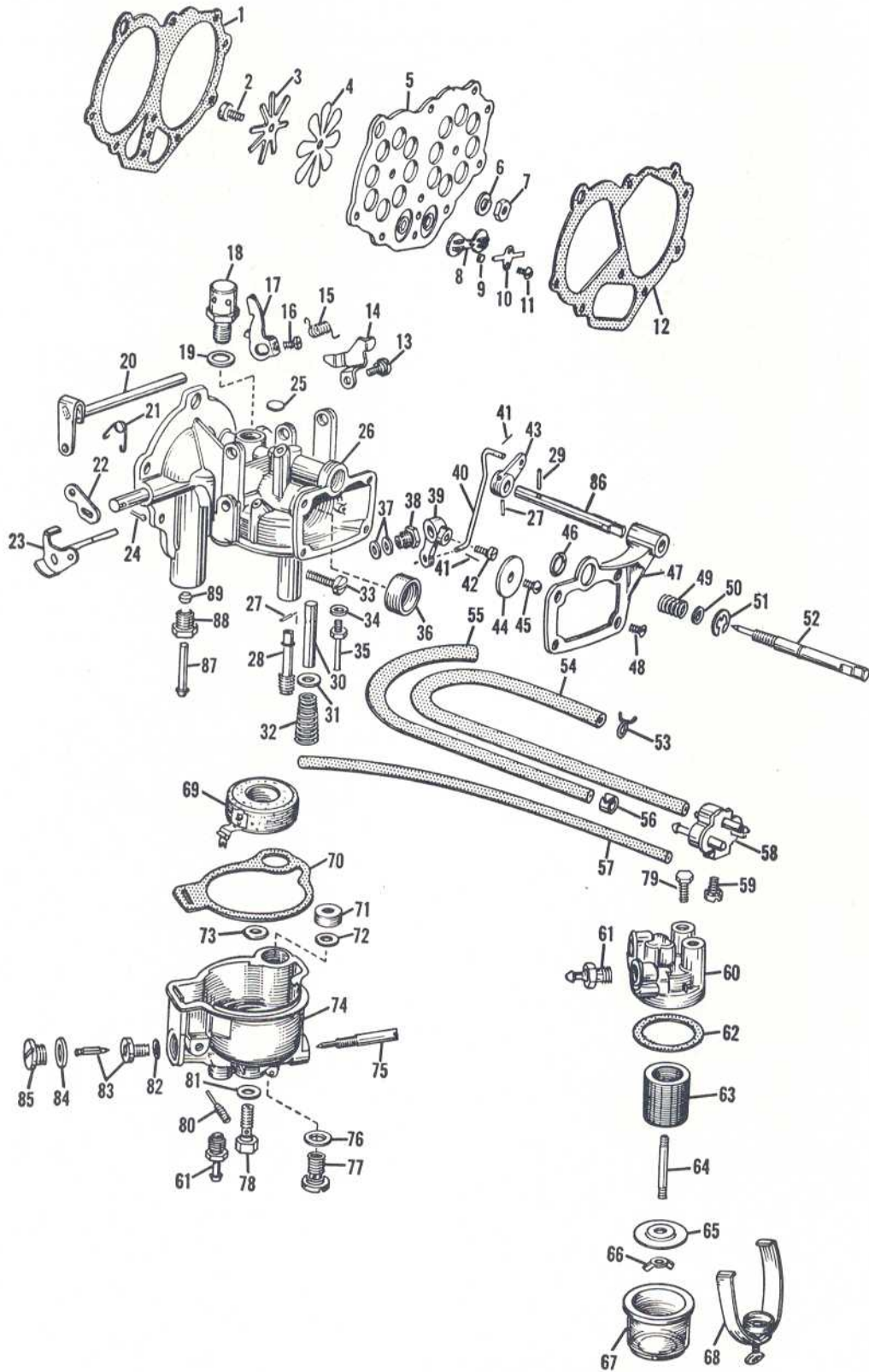
PHOTO AND PART NUMBERS FOR
CRANKSHAFT, PISTON AND CONNECTING ROD GROUP

Photo No.	Part No.	Name of Part	Photo No.	Part No.	Name of Part
1	510168	Cam	14	27-148	Needle Bearing
2	301857	Retaining Washer	15	120325	Wrist Pin Spring Ring
3	301861	Spring			
4	301860	Retaining Washer	16	301788	Wrist Pin
5	302036	Seal	17	375591	Piston and Dowel Pin Assembly
6	301967	O-Ring		(375668	Piston and Connecting Rod Assembly with Rings - Upper)
7	302035	O-Ring		(375730	Piston and Connecting Rod Assembly with Rings - Lower)
8	302499	Needle Bearing Assembly			
9	120395	Key	18	301787	Piston Rings
10	375980	Crankshaft Assembly			
11	301859	Retaining Ring			
12	202967	Screw			
13	375595	Connecting Rod Assembly			

See Page 22 for Numerical Part List

Order All Parts from Nearest Service Station or Dealer

CARBURETOR AND LEAF VALVE GROUP



Be Sure to Specify Model and Serial Number of Motor When Ordering Parts

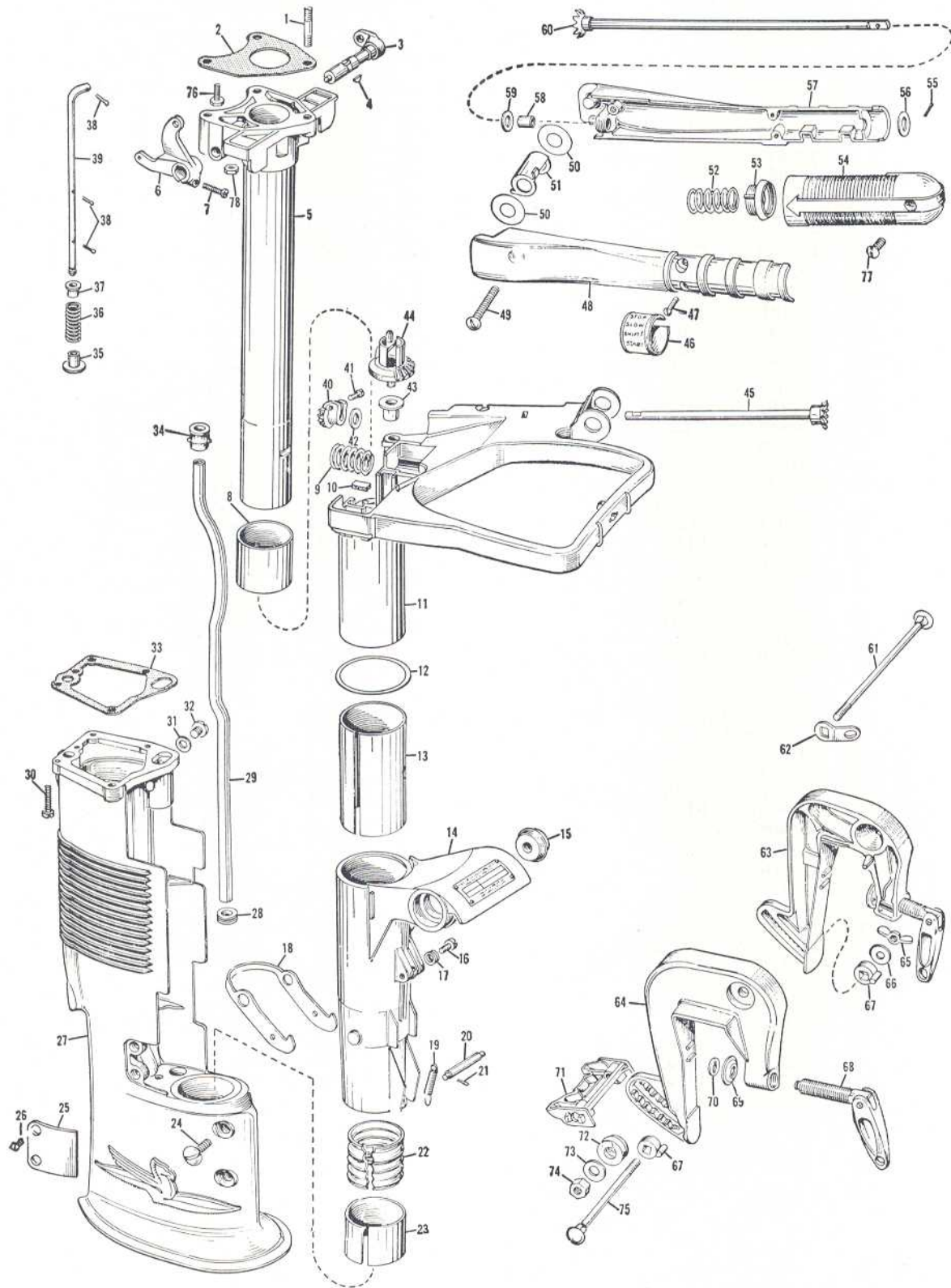
PHOTO AND PART NUMBERS FOR CARBURETOR AND LEAF VALVE GROUP

Photo No.	Part No.	Name of Part	Photo No.	Part No.	Name of Part
1	302045	Gasket	45	302105	Screw
2	301858	Screw	46	301877	O-Ring
3	302047	Leaf Stop	47	302070	Bracket
4	301965	Leaf	48	51-206	Screw
5	302049	Leaf Plate	49	302027	Spring
6	71-1487	Lockwasher	50	85-54	Washer
7	85-64	Nut	51	302015	E-Ring
8	302042	Check Valve	52	302026	Needle Valve
9	302046	Spacer	53	302647	Clamp
10	302048	Spring	54	303171	Hose
11	19-191	Screw	55	303170	Hose
12	302044	Gasket	56	301822	Clamp
13	302077	Screw	57	303111	Hose
14	302078	Bell Crank	58	375788	Body Assembly
15	303095	Spring	59	303311	Screw
16	300181	Screw	60	302067	Body
17	302086	Cam Lever		(375623	Filter Assembly)
18	375628	Venturi Assembly	61	303172	Nipple
19	301995	Washer	62	302065	Gasket
20	375963	Cross Shaft, Lever and Pin Assembly	63	302062	Filter
21	302071	Spring	64	302063	Stud
22	302072	Link	65	302060	Retainer
23	375627	Throttle Shaft, Lever and Pin Assembly	66	302061	Wing Nut
24	41-163	Cotter Pin	67	302064	Glass Bowl
25	7-178	Core Plug	68	375622	Filter Yoke Assembly
26	375680	Carburetor Body, Valve and Venturi Assembly	69	375619	Float and Arm Assembly
	(375975	Carburetor Assembly Complete)	70	302043	Gasket
27	301001	Groove Pin	71	302833	Retainer
28	302004	Nozzle	72	302832	O-Ring
29	302130	Groove Pin	73	301999	Gasket
30	302003	Plunger	74	375616	Float Chamber and Plug Assembly
31	301405	Washer	75	302029	Needle Valve
32	302162	Spring	76	21-199	Washer
33	43-110	Screw	77	42-62	Check Valve
34	13-347	Gasket	78	302006	Screw
35	301846	Jet	79	51-135	Screw
36	302052	Venturi	80	302012	Hinge Pin
37	43-123	Packing	81	300111	Gasket
38	300179	Packing Nut	82	301996	Washer
39	302069	Arm	83	375654	Float Valve and Seat Assembly
40	302076	Link	84	301998	Washer
41	41-110	Pin	85	302011	Screw
42	131249	Screw	86	302079	Control Shaft
43	302068	Arm	87	303139	Nipple
44	302024	Throttle Valve	88	27-308	Gland Nut
			89	13-306	Gland

See Page 22 for Numerical Part List

Order All Parts from Nearest Service Station or Dealer

LOWER UNIT AND STEERING HANDLE GROUP



Be Sure to Specify Model and Serial Number of Motor When Ordering Parts

PHOTO AND PART NUMBERS FOR LOWER UNIT AND STEERING HANDLE GROUP

Photo No.	Part No.	Name of Part	Photo No.	Part No.	Name of Part
1	15-149	Stud	42	303107	Washer
2	302232	Gasket	43	303140	Bushing
3	375976	Shaft and Lever Assembly	44	303141	Gear
4	25-271	Key	45	375979	Gear and Shaft Assembly
5	375964	Flange and Driveshaft Casing Assembly	46	303110	Plate
6	303108	Clamping Lever	47	133452	Screw
7	43-110	Screw	48	303093	Steering Handle - Inner Half
8	303075	Lining	49	303078	Screw
9	303077	Spring	50	303079	Washer
10	303076	Pad	51	303096	Cover
11	375968	Steering Bracket and Bushing Assembly	52	301656	Spring
12	301892	Thrust Washer	53	303282	Friction Block
13	301893	Lining	54	303213	Grip
14	375635	Swivel Bracket and Screw Assembly	55	300346	Groove Pin
15	301983	Conical Washer	56	303252	Washer
16	15-251	Screw	57	376042	Steering Handle and Bushing Assembly
17	71-1085	Spring	58	302717	Bushing
18	302518	Locking Lever	59	302712	Washer
19	301898	Spring	60	375977	Gear and Shaft Assembly
20	301895	Rod	61	301984	Bolt
21	301974	Cotter Pin	62	300364	Link
22	301899	Rubber Bushing	63	375613	Stern Bracket and Clamp-screw Assembly - Port
23	301900	Spacer	64	375614	Stern Bracket and Clamp -Screw Assembly - Star
24	303136	Screw	65	41-59	Wing Nut
25	303135	Cover Plate	66	37-154	Washer
26	302681	Screw	67	301897	Lockplate
27	375998	Exhaust Housing Assembly	68	375742	Clamp-screw, Swivel Plate and Retainer Assembly
28	302498	Grommet	69	41-48	Swivel Plate
29	303097	Water Tube	70	302420	Retainer
30	25-238	Screw	71	302519	Thrust Socket
31	27-284	Washer	72	302051	Spring
32	27-283	Flush Plug	73	25-196	Washer
33	303138	Gasket	74	17-182	Nut
34	302497	Grommet	75	303232	Bolt
35	301915	Sleeve	76	7-116	Screw
36	301914	Spring	77	302710	Screw
37	301913	Sleeve	78	7-46	Nut
38	15-268	Cotter Pin			
39	303101	Shift Rod			
40	303142	Pinion			
41	71-1352	Screw			

MODEL QDL-14 PARTS THAT DIFFER FROM MODEL QD-14

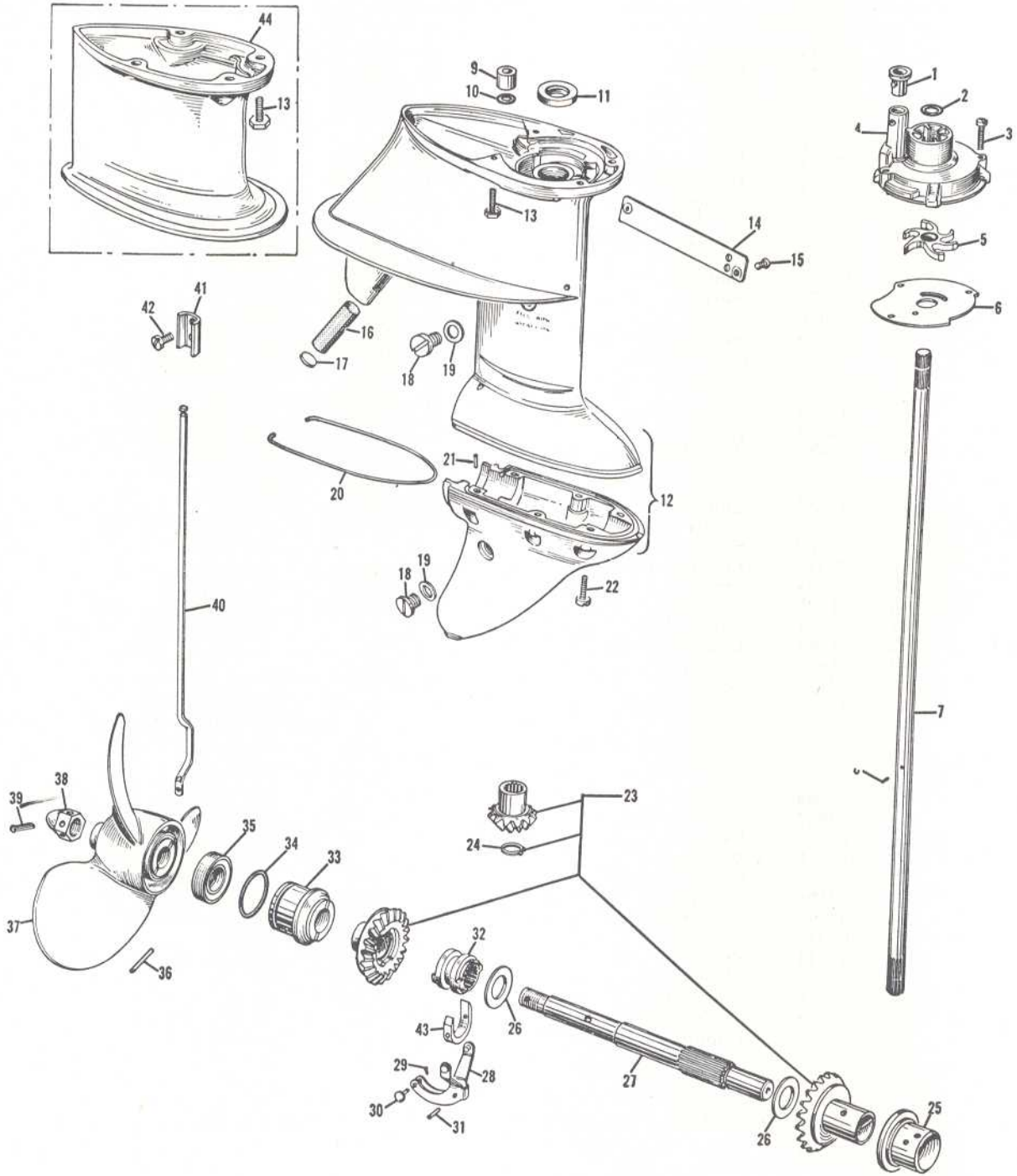
29 303258 Water Tube QDL

(See Page 17 for Other QDL-14 Parts)

See Page 22 for Numerical Part List

Order All Parts from Nearest Service Station or Dealer

GEARCASE ASSEMBLY



Be Sure to Specify Model and Serial Number of Motor When Ordering Parts

PHOTO AND PART NUMBERS FOR GEARCASE ASSEMBLY

Photo No.	Part No.	Name of Part	Photo No.	Part No.	Name of Part
1	302497	Grommet	24	301883	Retaining Ring
2	303067	O Ring	25	302496	Bearing
3	302508	Screw	26	301884	Thrust Washer
4	303070	Impeller Housing	27	302483	Propeller Shaft
5	375638	Impeller Assembly	28	375755	Shifter Lever and Pin Assembly
6	303069	Plate			
7	302491	Driveshaft	29	301912	Cotter Pin
8	300771	Pin	30	302504	Pin
9	301878	Bushing	31	302501	Pivot Pin
10	301877	O Ring	32	375711	Shifter Assembly
11	41-62	Seal	33	375751	Gearcase Head and Bearing Assembly
12	375784	Gearcase and Bearing Assembly			
13	302510	Screw	34	302493	O Ring
14	302505	Cover	35	302494	Seal
15	302509	Screw	36	301923	Drive Pin
16	302757	Screen	37	375605	Propeller and Bushing Assembly
17	300314	Plug			
18	27-283	Plug	38	132477	Nut
19	27-284	Washer	39	302381	Cotter Pin
20	302513	Seal	40	303098	Shift Rod
21	300611	Dowel	41	303148	Connector
22	33-76	Screw	42	303147	Screw
23	375844	Pinion, Gears and Bushing Assembly	43	302500	Cradle

MODEL QDL-14 PARTS THAT DIFFER FROM MODEL QD-14

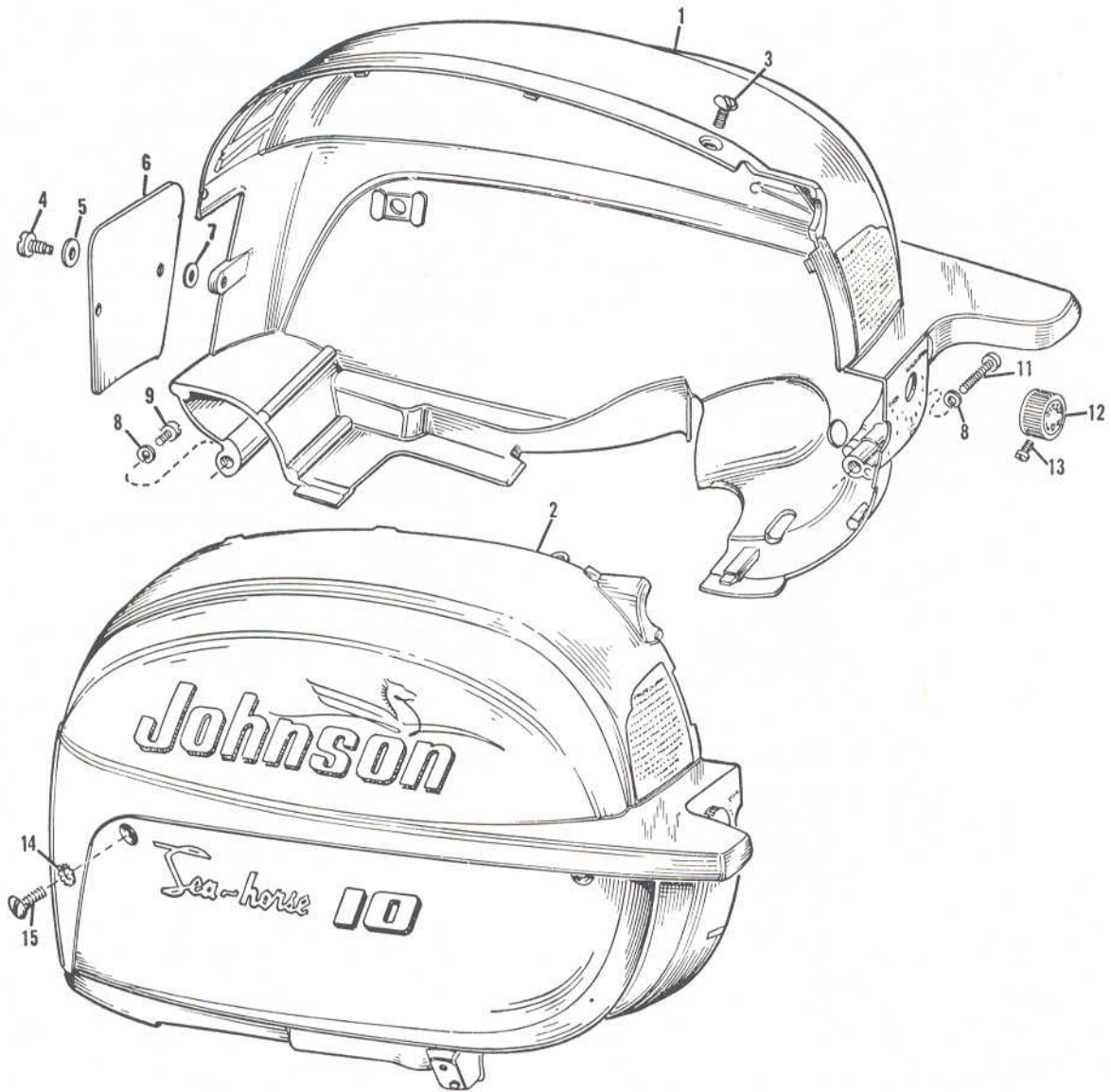
7	302512	Driveshaft (QDL)
13	302510	Screw (QDL)
40	303257	Shift Rod (QDL)
44	303260	Gearcase Extension (QDL)

(See Page 15 for QDL Water Tube)

See Page 22 for Numerical Part List

Order All Parts from Nearest Service Station or Dealer

SHROUDS



Be Sure to Specify Model and Serial Number of Motor When Ordering Parts

PHOTO AND PART NUMBERS FOR SHROUDS

Photo No.	Part No.	Name of Part	Photo No.	Part No.	Name of Part
1	375999	Shroud Cover and Transfer Assembly - Port	10	302849	Transfer - Port
2	376000	Shroud Cover and Transfer Assembly - Star	10	302852	Transfer - Star
3	302007	Screw	11	11-209	Screw
4	302001	Screw	12	302025	Adjusting Knob
5	302380	Washer	13	43-156	Screw
6	302057	Cover	14	41-338	Lockwasher
7	302186	Washer	15	41-37	Screw
8	302376	Lockwasher	16	303264	Transfer - Starting - Star
9	302008	Screw	17	302847	Transfer - Oiling - Port
			18	303187	Transfer -Port and Star

See Page 22 for Numerical Part List

Order All Parts from Nearest Service Station or Dealer

Warranty

We warrant each new outboard motor of our manufacturers to be free from defects in material and workmanship under normal use and service, our obligation under this warranty being limited to making good at the factory any part or parts thereof which shall, within three (3) months after delivery of such motor to original purchasers, be returned to us with transportation charges prepaid, and which our examination shall disclose to our satisfaction to have been thus defective; this warranty being expressly in lieu of all other warranties and representations expressed or implied and of all other liabilities in connection with the sale or use of any motors.

This warranty shall not apply to any motor which shall have been repaired or altered outside the factory in any way so as to affect its stability, nor which has been subject to misuse, negligence or accident. Warranty is void if motor is used for racing purpose.

We make no warranty in respect to trade accessories not of our manufacture; inasmuch as they are usually warranted separately by their respective manufacturers.

Because of the usual strains and accidents to which such products may be subjected, we make no warranty of either material or workmanship in racing outboard motors or any of our products when used for racing.

Claims must be entered on motors or motor parts returned to the factory for inspection, repair or replacement. Request form No. SE-16 from local Johnson Dealer or Service Station. **This form should be filled in, signed by the motor owner and dealer or service station representatives and mailed to the factory with returned material, TRANSPORTATION CHARGES PREPAID.**